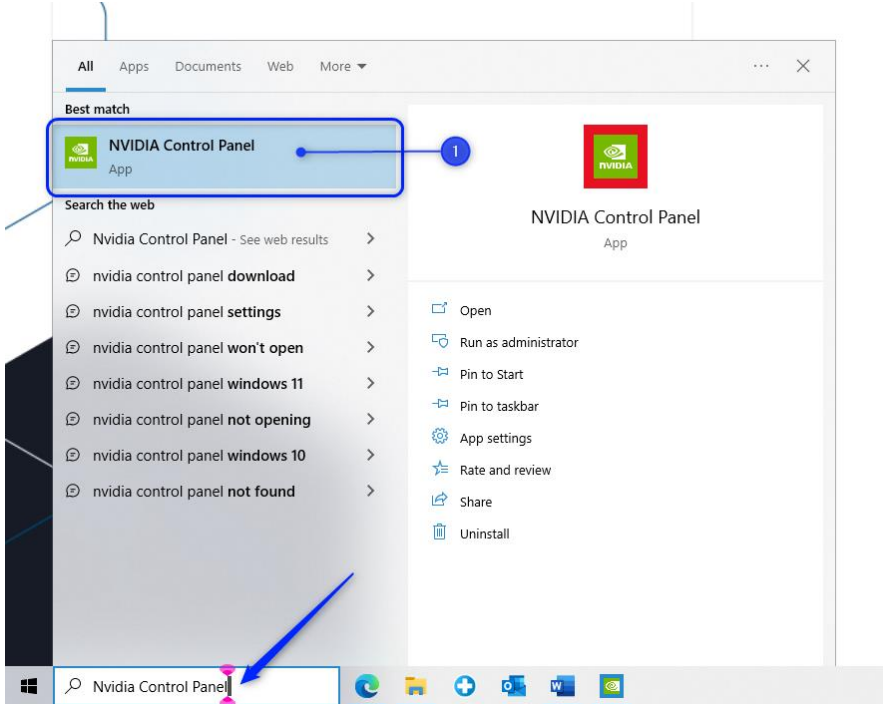


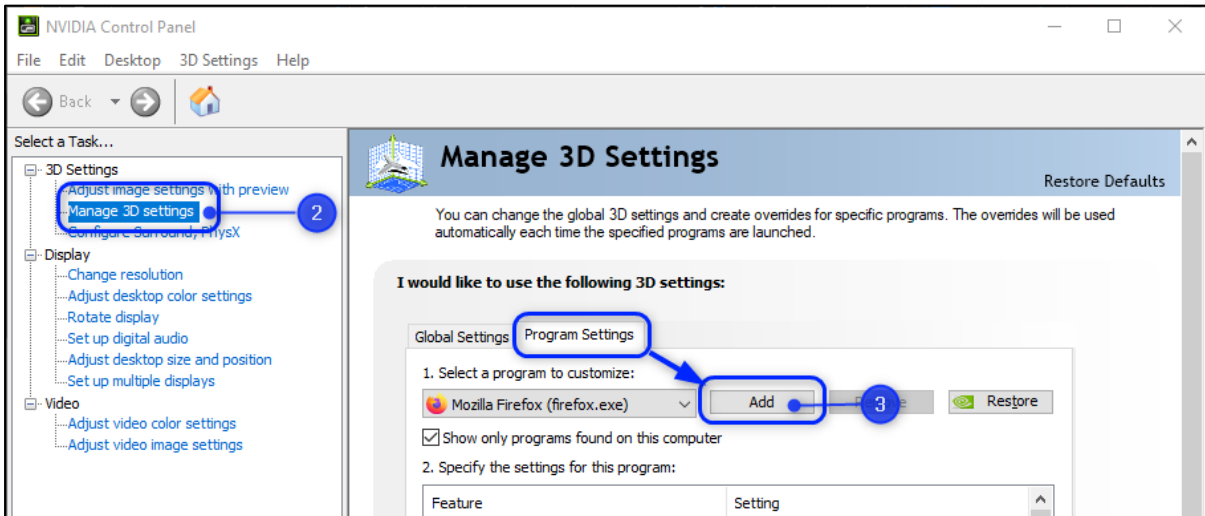
Setting up dedicated GPU for Nvidia Graphics Cards

Part 1: Setting 3D Settings (CETDesigner.exe)

1. In the Windows Search Bar (or Start Menu), search **Nvidia Control Panel** and open it. (You can also find it by right-clicking on your Desktop.)



2. Under **3D Settings**, select **Manage 3D Settings**,



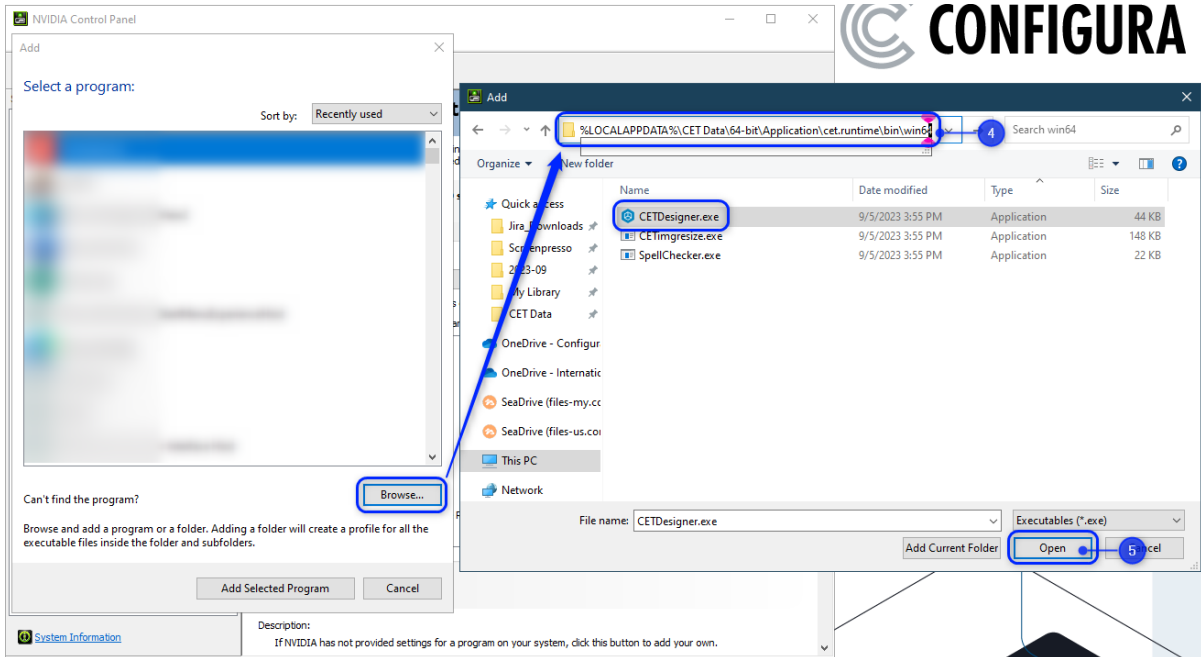
3. Click on the **Program Settings** tab and click **Add**.
4. In the **Add** window, click **Browse** and enter the Path where the User's running instance of **CETDesigner.exe** resides.

For the Official version of CET, this is...

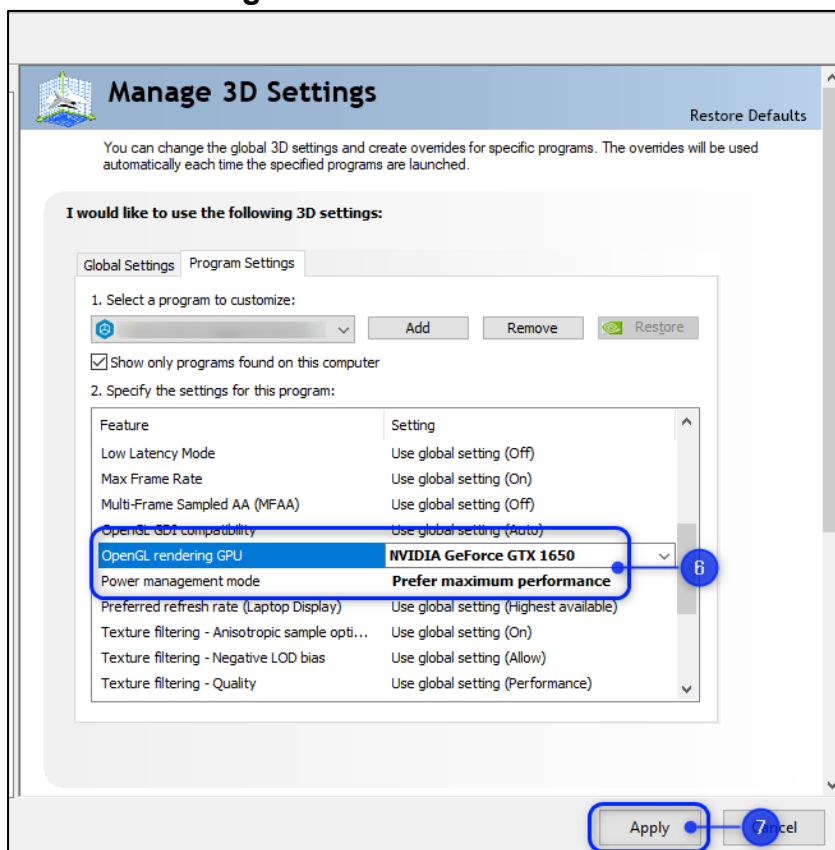
%LOCALAPPDATA%\CET Data\64-bit\Application\cet.runtime\bin\win64

5. Select **CETDesigner.exe** and click **Add**.

Setting up dedicated GPU for Nvidia Graphics Cards



6. Scroll down to the settings below and set the respective options...
 - a. **OpenGL rendering GPU** — Choose your dedicated Graphics Card (Should be Nvidia)
 - b. **Power management mode** — Prefer Maximum Performance

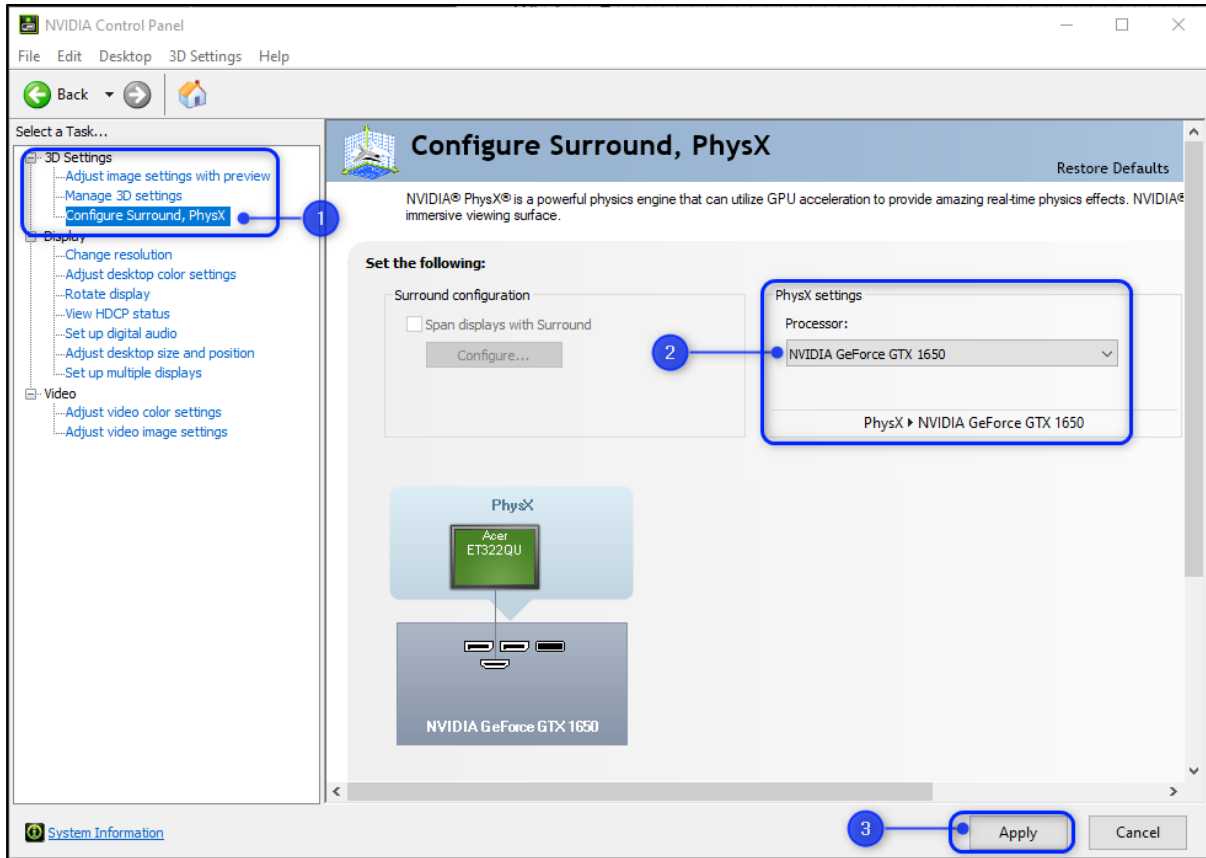


7. Click **Apply** at the bottom.
8. Launch CET with a **Clean Start** or restart your Computer for it to take effect.

Setting up dedicated GPU for Nvidia Graphics Cards

Part 2: Configure PhysX

1. Again, in the **Nvidia Control Panel** like in Part 1, under **3D Settings**, select **Configure Surround, PhysX**.



2. In the **PhysX Settings**, hit the dropdown menu and select your dedicated Graphics Card as the Processor. (Should say Nvidia ...).
3. Click **Apply** at the bottom.
4. Launch CET with a [Clean Start](#) or restart your Computer for it to take effect.