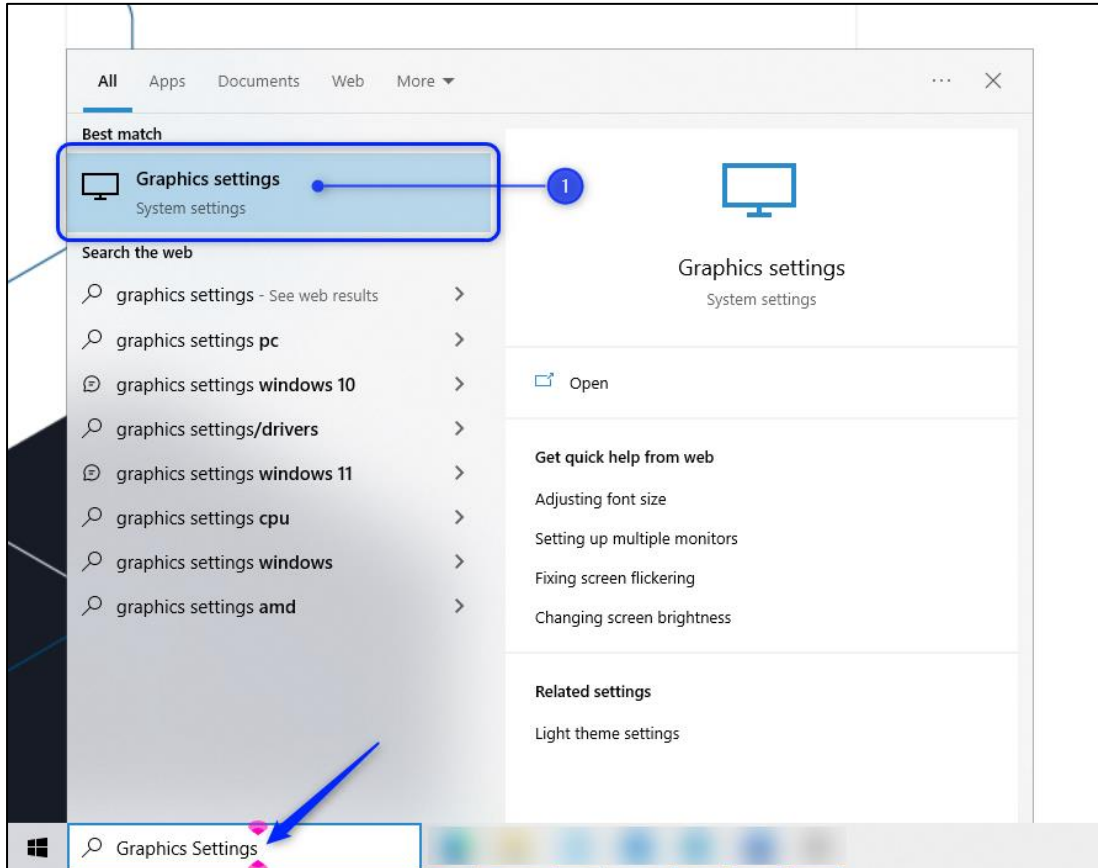
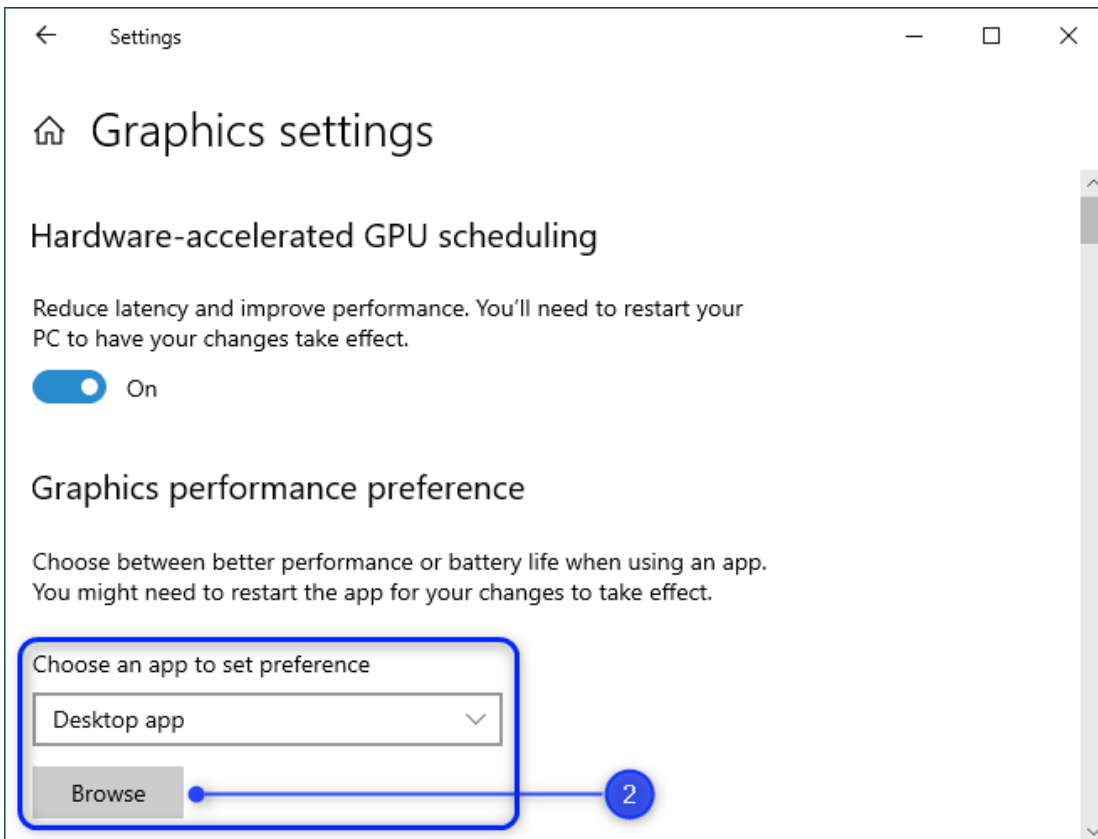


Configuring Windows to use High Graphic Performance

1. In the Windows Search Bar (or Start Menu), search **Graphics Settings** and open it.



2. In **Graphics Settings**, choose **Desktop App** in the Preference dropdown, then click **Browse**.

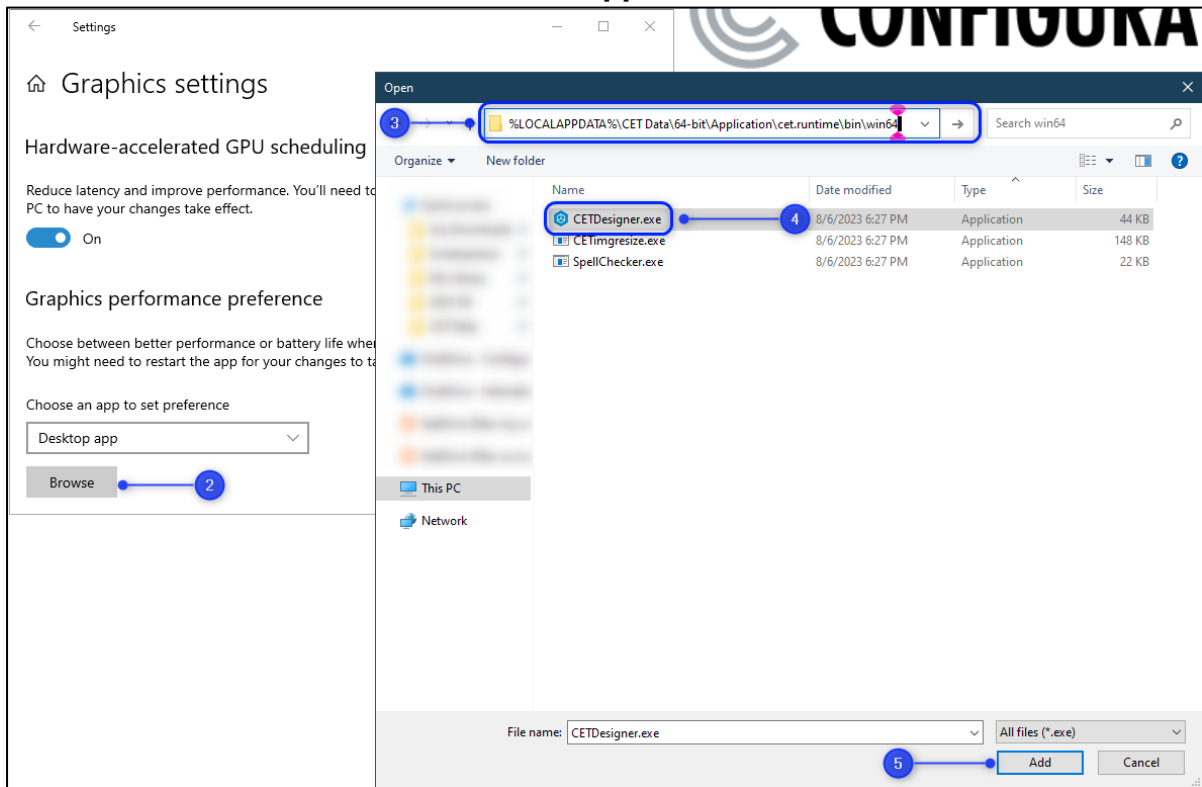


3. In the Open window, enter the Path where the User's running instance of **CETDesigner.exe** resides.

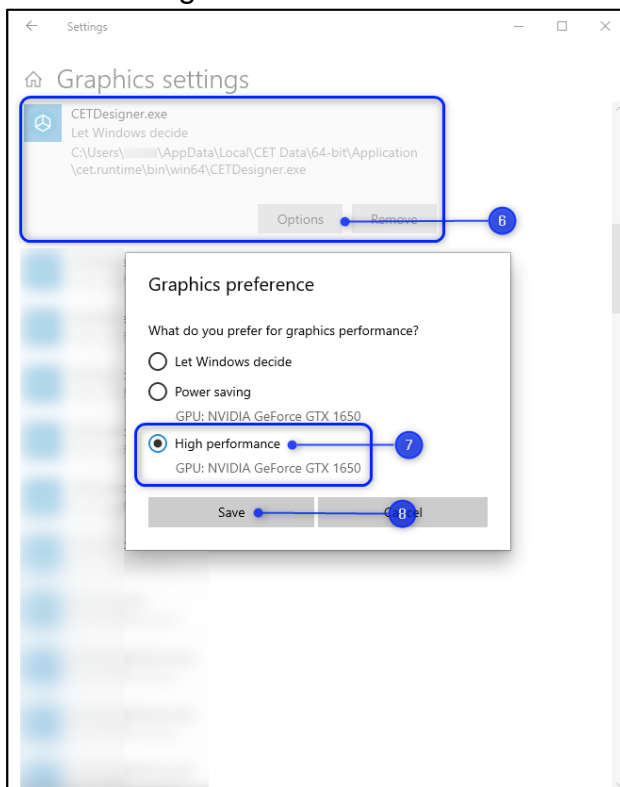
Configuring Windows to use High Graphic Performance

For the Official version of CET, this is...

%LOCALAPPDATA%\CET Data\64-bit\Application\cet.runtime\bin\win64



4. Select **CETDesigner.exe** in that folder.
5. Click **Add**.
6. **CETDesigner.exe** will be added to the list in the **Graphic Settings** window. Click **Options** for CETDesigner.exe



7. Next, select **High Performance** (Most likely to say NVIDIA).
8. Then, hit **Save**.
9. Launch CET with a [Clean Start](#) or restart your Computer for it to take effect.